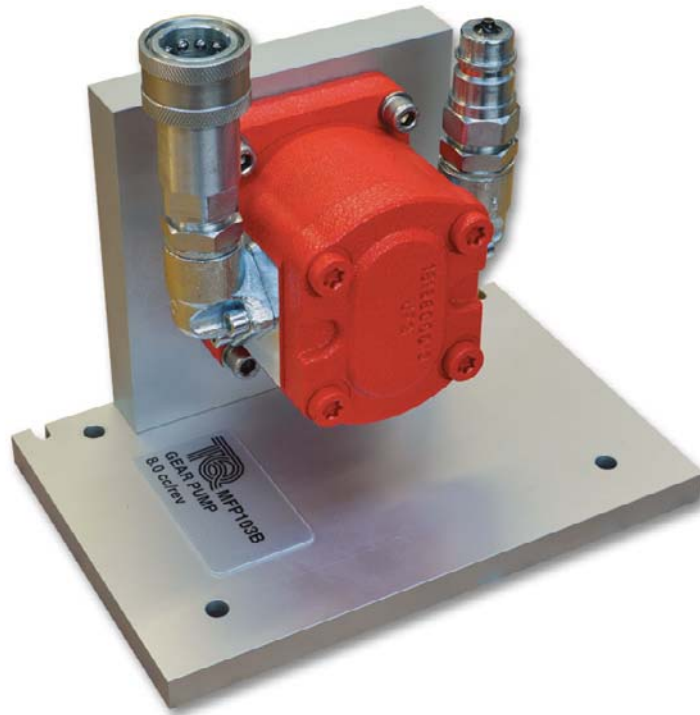




MFPI03B

## GEAR PUMP

Gear pump for use with the Positive Displacement Pump Support Module (MFP103)



- Popular design pump for use with TecEquipment's Positive Displacement Pump Support Module (MFP103)
- Quick-release, self-sealing connections for simple and safe fitting
- Shows the characteristics of a gear pump

# GEAR PUMP

## DESCRIPTION

For use with the Positive Displacement Pump Module (MFP103) this pump is ideal for student experiments, demonstrations and projects.

The gear pump is a positive displacement pump. It has double gears that deliver a given volume of fluid (oil) for each full rotation of the pump shaft.

The gear rotation generally determines the flow direction, but you only test the pump in one direction, determined by the Universal Dynamometer.

Self-sealing connections reduce oil spillage and simplify installing the pump to the pump module.

## STANDARD FEATURES

- Five-year warranty
- Made in accordance with the latest European Union directives

## LEARNING OUTCOMES

- Performance and characteristics of a gear pump
- Volumetric and overall efficiencies
- Use of an oval gear flowmeter

### WHEN TWO OR MORE OPTIONAL PUMPS ARE ORDERED:

- Comparison of positive displacement pumps (economy, flow rate and output pressure pulses)

## ESSENTIAL BASE UNIT

- Positive Displacement Pump Module (MFP103) (with Universal Dynamometer MFP100)

## OPERATING CONDITIONS

### OPERATING ENVIRONMENT:

Laboratory

### STORAGE TEMPERATURE RANGE:

-25°C to +55°C (when packed for transport)

### OPERATING TEMPERATURE RANGE:

+5°C to +40°C

### OPERATING RELATIVE HUMIDITY RANGE:

80% at temperatures < 31°C decreasing linearly to 50% at 40°C

## SPECIFICATION

### NETT DIMENSIONS:

Approximately 250 mm x 250 mm x 250 mm and 8 kg

### PACKED DIMENSIONS:

Approximately 0.05 m<sup>3</sup>